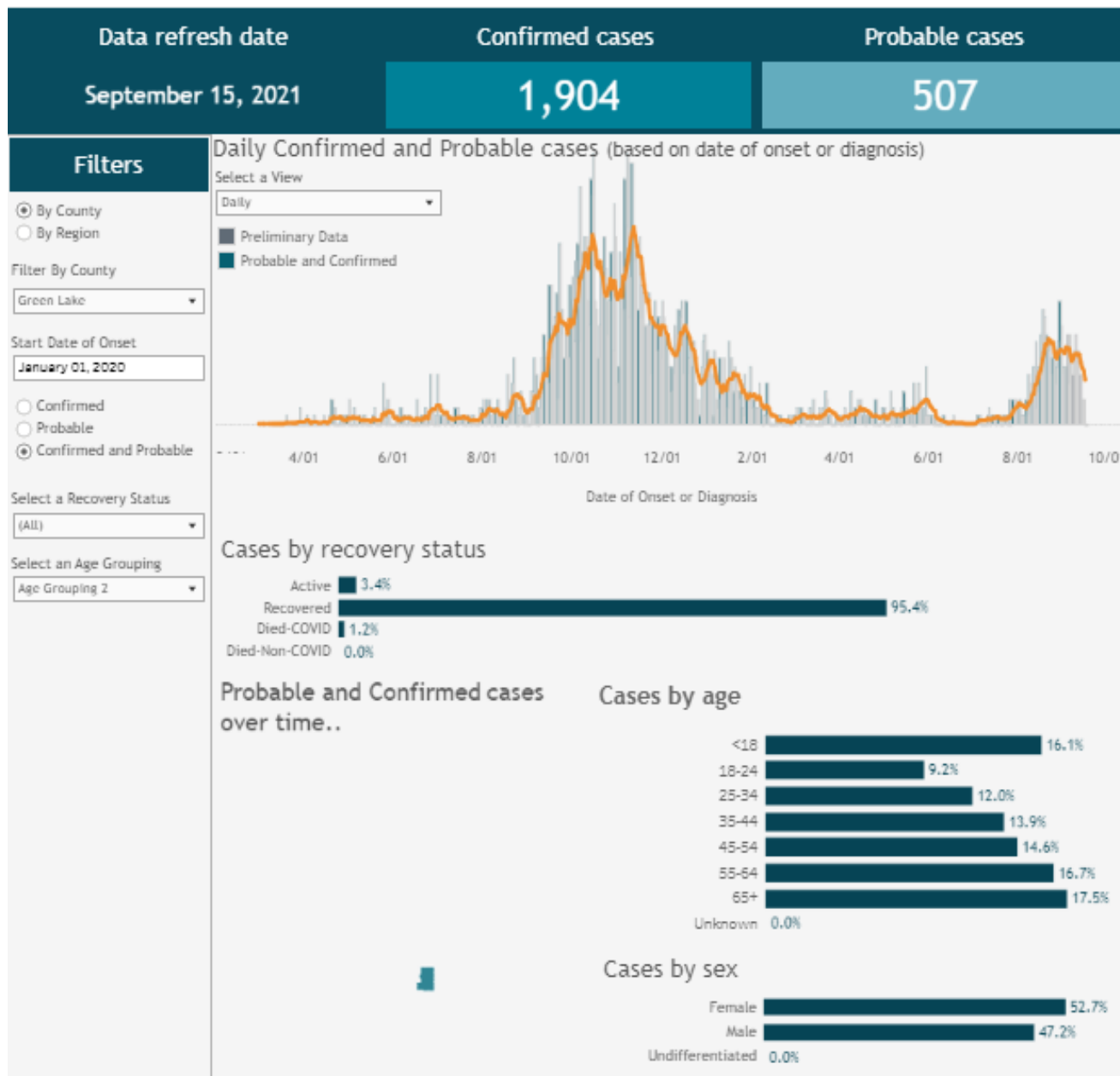
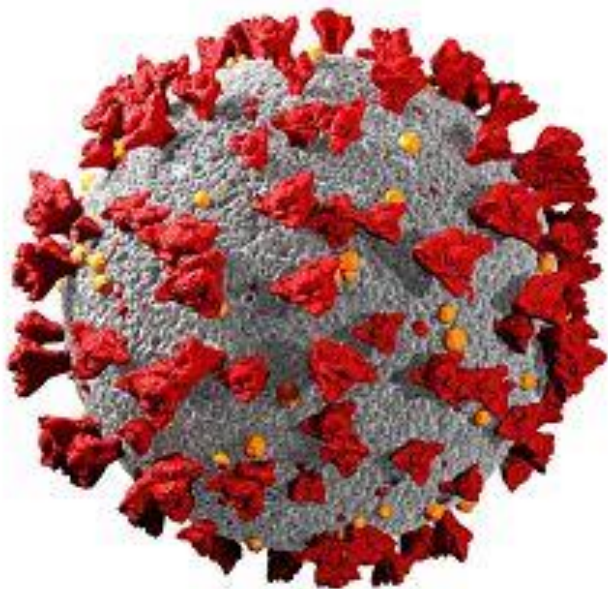


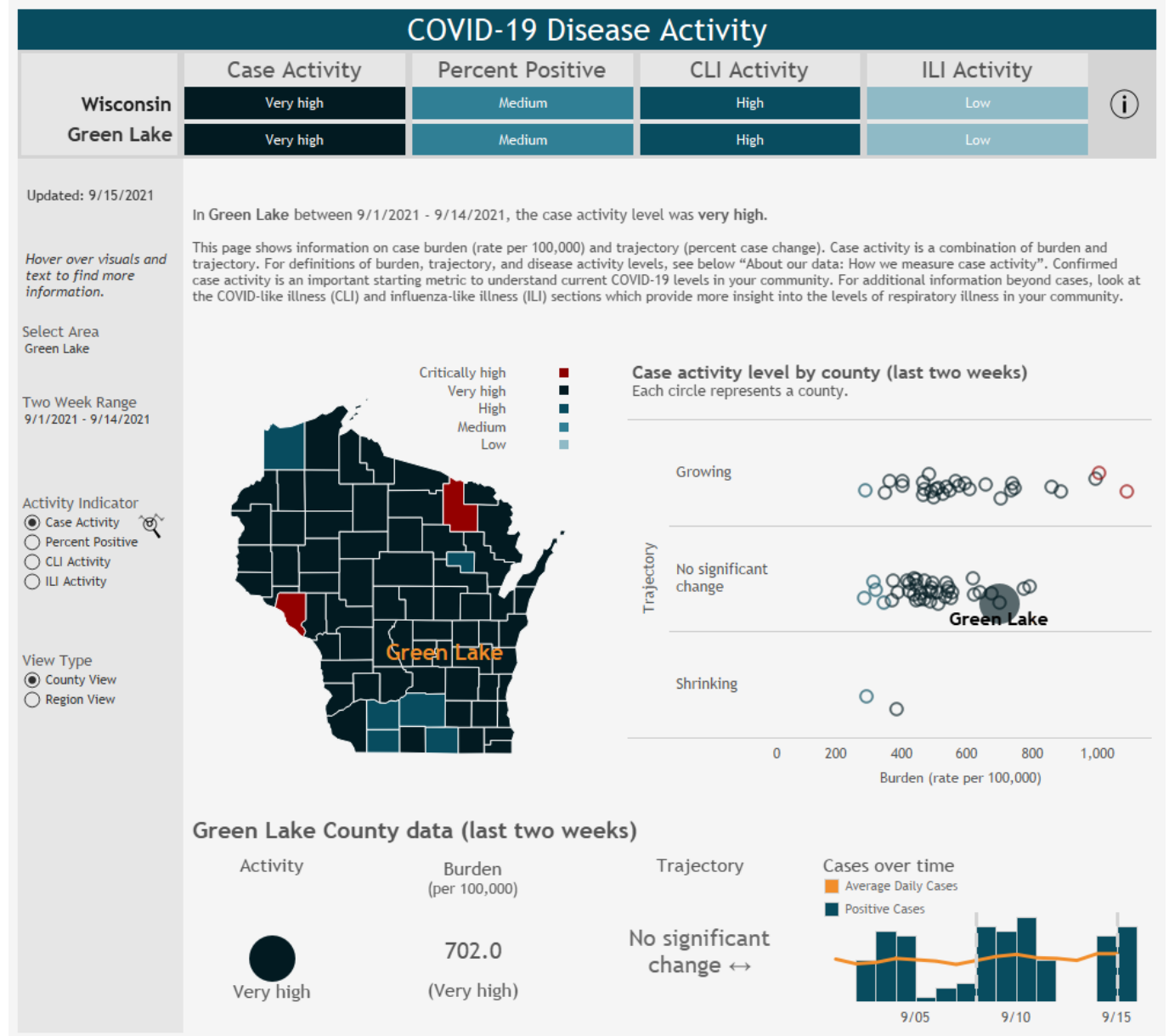
COVID-19 UPDATE

Rachel Prellwitz, Health Officer

COVID-19 METRICS

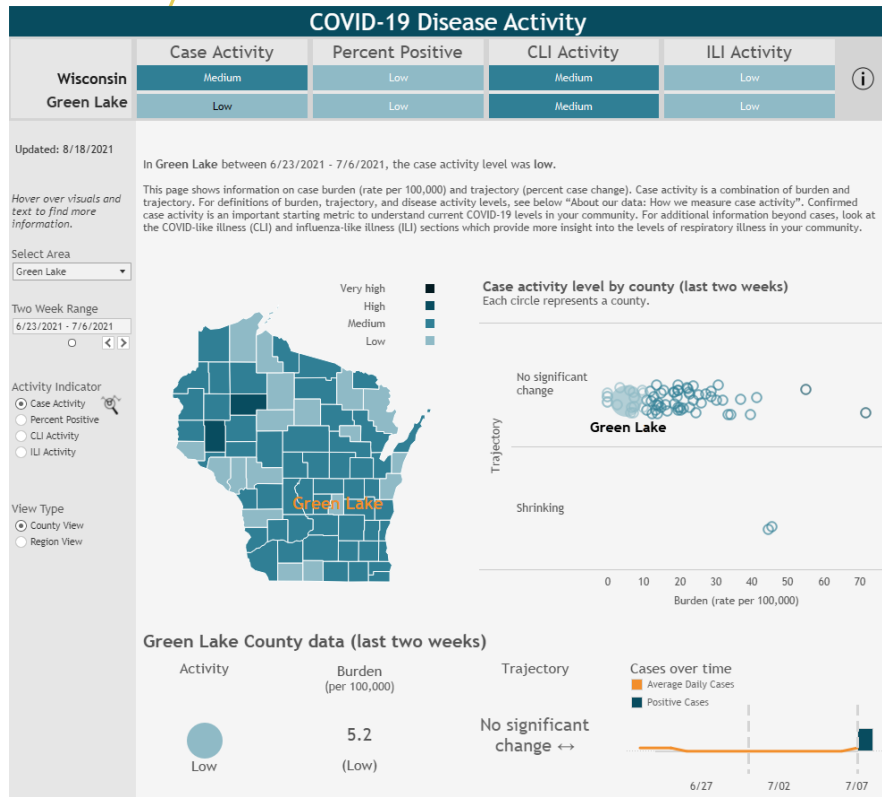


DISEASE ACTIVITY

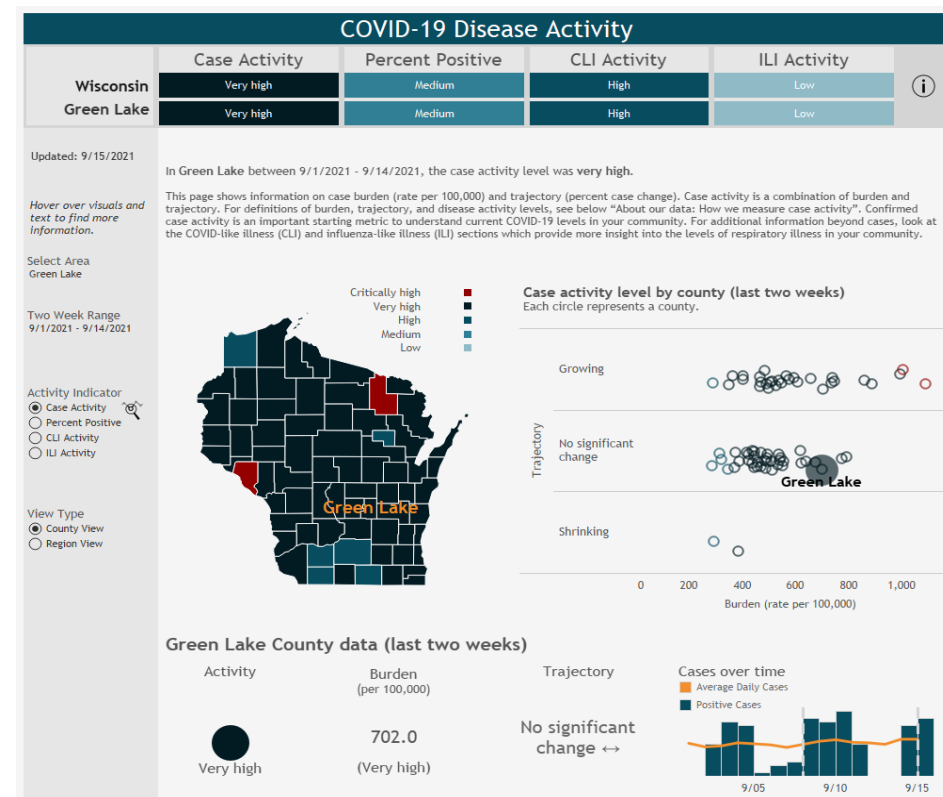


DISEASE ACTIVITY COMPARISON

JUNE/JULY 2021



PRESENT



COVID-19 Disease Activity

	Case Activity	Percent Positive	CLI Activity	ILI Activity	
Wisconsin	Very high	Medium	High	Low	i
Green Lake	Very high	Medium	High	Low	

Updated: 9/15/2021

In Green Lake over the last seven days in the selected two week range the percent of tests returned positive was **medium**.

Hover over visuals and text to find more information.

Percent positive for Wisconsin residents tested in- and out-of-state is calculated as the number of positive COVID-19 tests divided by the total number of tests administered in the last seven days for the selected two week range. If people tested positive or negative more than once, they are included and counted each time, on the date the testing lab reports their test result. If a person is tested more than once on a single date, they are only counted once per day. Tests are limited to diagnostic, confirmatory polymerase chain reaction (PCR) tests or nucleic acid amplification tests (NAT) that detect the genetic material of SARS-CoV-2, the virus that causes COVID-19. No antigen or antibody test results are included in this figure.

Select Area
Green Lake

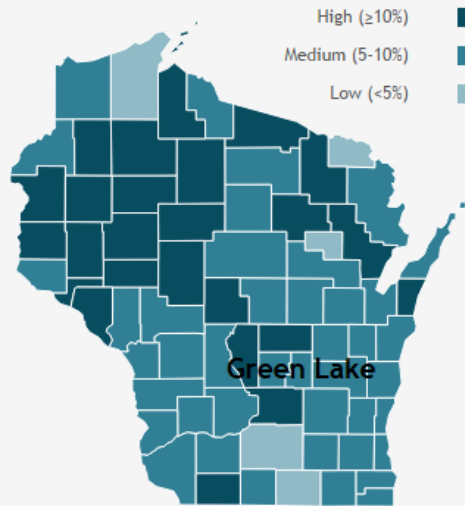
Two Week Range
9/1/2021 - 9/14/2021

Activity Indicator

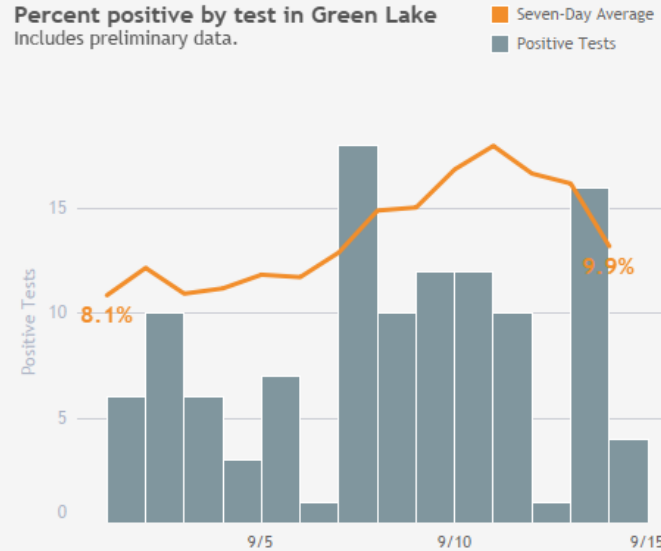
- Case Activity
- Percent Positive
- CLI Activity
- ILI Activity

View Type

- County View
- Region View



Percent positive by test in Green Lake
Includes preliminary data.



Green Lake County data

Percent Positive
past seven days

9.9%

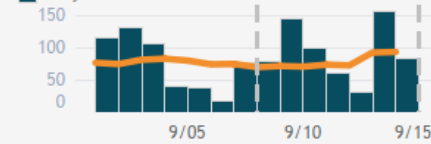
Tests Administered
past fourteen days

1,188

Tests Over Time

Average Daily Tests

Daily Tests



PERCENT POSITIVE

Past 7 days

DELTA VARIANT

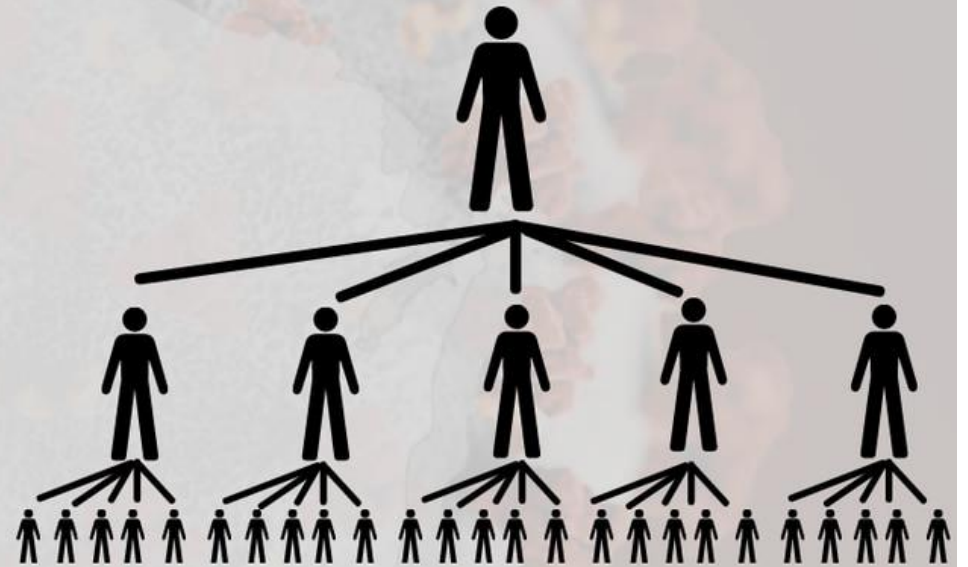
Here's how many more people the Delta variant could infect

Original COVID-19 strain

Delta Variant



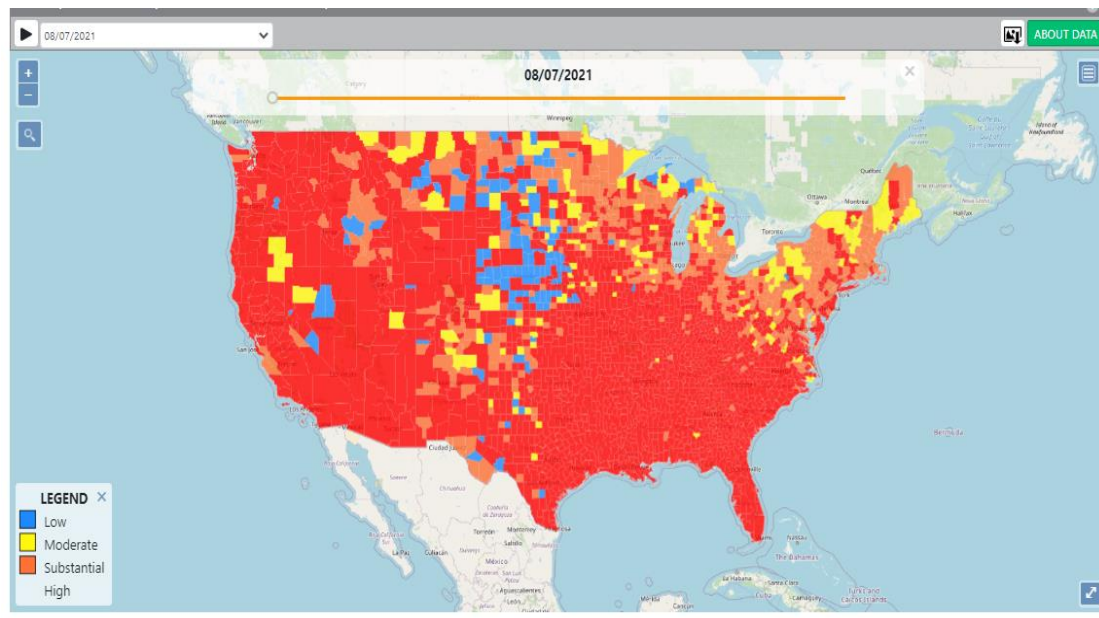
Spreads to: **6**



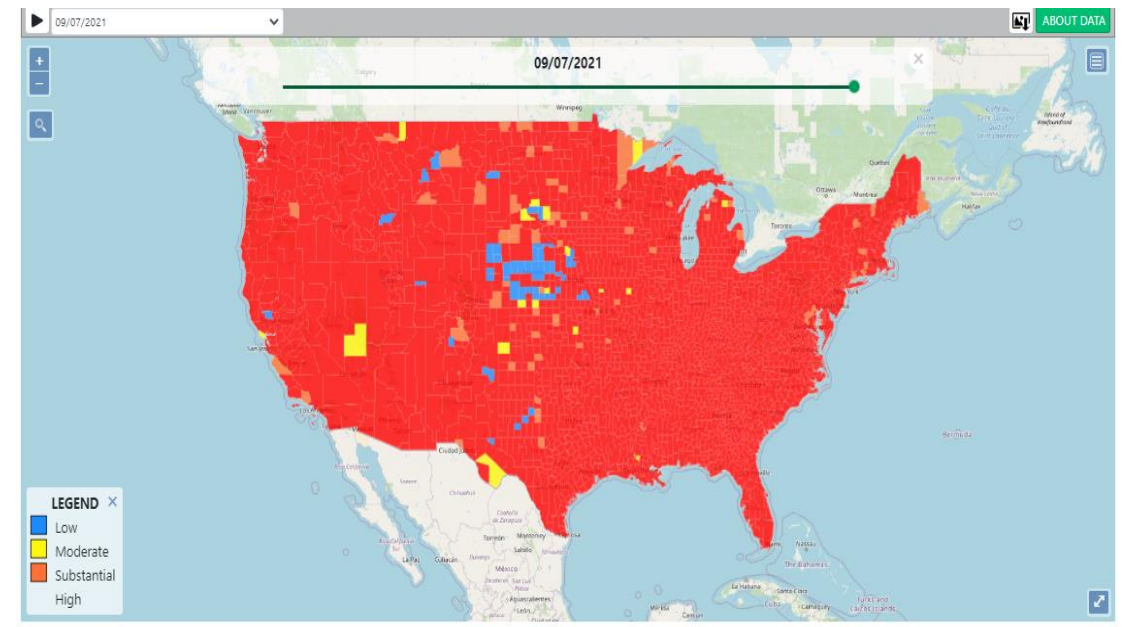
Spreads to: **30**

COMMUNITY TRANSMISSION

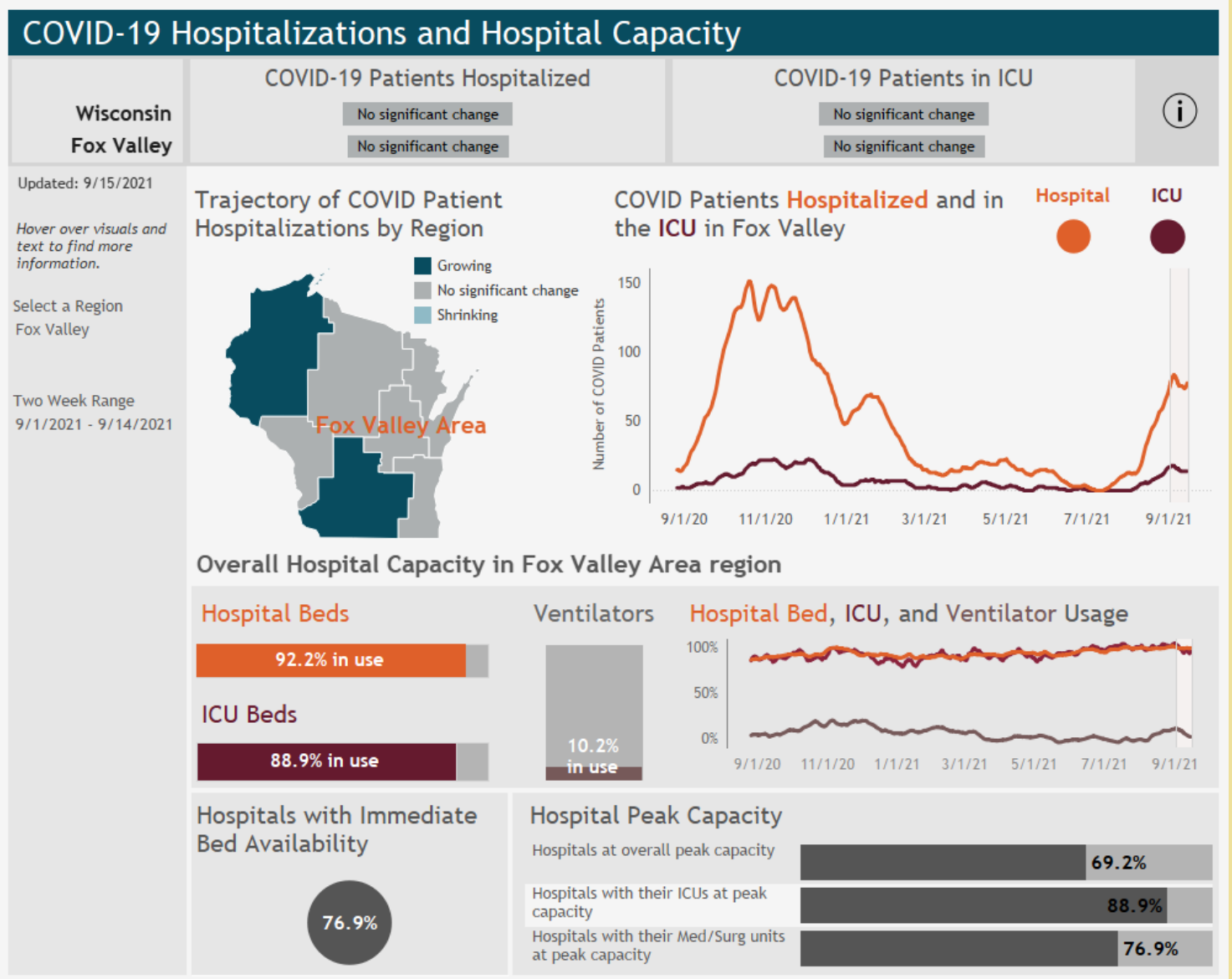
8/7/2021



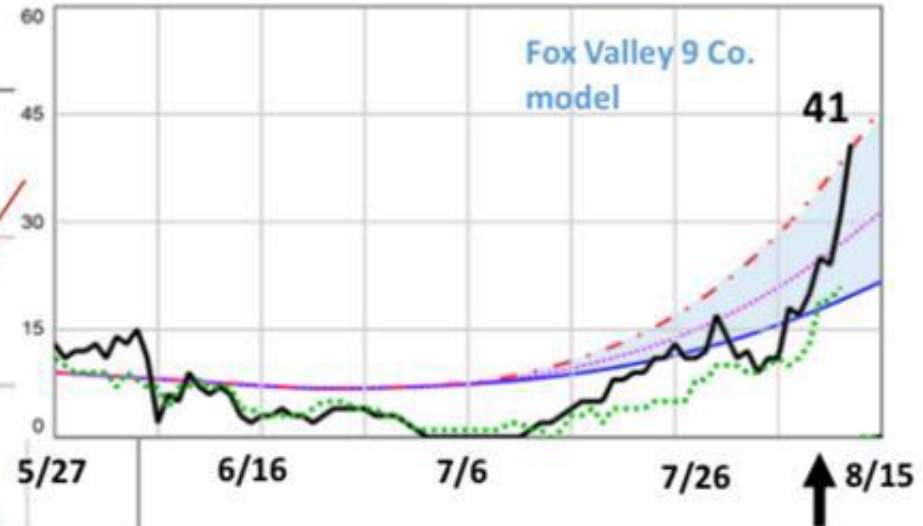
9/7/2021



HOSPITAL CAPACITY



COVID Bed Daily Census



Getting fully vaccinated will continue to reduce hospital load and save lives!

Breakthrough Cases and Hospitalizations

April – June 2021 (Pre-Delta)

April - June Week #	Unvaccinated		Fully Vaccinated	
	Positives	Hospitalized	Positives	Hospitalized
Apr 4 - 10	126	12	3	1
Apr 11 - 17	101	10	1	0
Apr 18 - 24	61	9	4	2
Apr 25 - May 1	69	14	4	0
May 2 - 8	64	6	2	0
May 9 - 15	59	6	1	0
May 16 - 22	64	8	3	1
May 23 - 29	44	4	3	0
May 30 - Jun 5	33	5	0	0
Jun 6 - 12	28	4	2	0
Jun 13 - 19	7	2	1	0
Jun 20 - 26	8	2	1	0
Jun 27 - Jul 3	13	0	2	0
Total	677	82	27	4

Breakthrough Cases (April – June):

- 3.8% of all positives
- 4.7% of all hospitalizations

July 2021

July Week #	Unvaccinated		Fully Vaccinated	
	Positives	Hospitalized	Positives	Hospitalized
Jul 4 - 10	15	2	5	0
Jul 11 - 17	23	5	7	1
Jul 18 - 24	38	4	7	0
Jul 25 - 31	72	6	17	2
Total	148	17	36	3

Breakthrough Cases (July):

- 20% of all positives
- 15% of all hospitalizations

August 2021

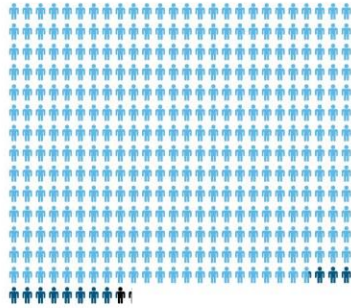
August Week	Unvaccinated		Fully Vaccinated	
	Positives	Hospitalized	Positives	Hospitalized
Aug 1 - 7	88	6	25	1
Aug 8 - 14	137	13	50	4
Aug 15 - 21	196	16	53	8
Aug 22 - 28	224	18	66	6
Aug 29 -	81	5	21	3
Total	726	58	215	22

Breakthrough Cases (August):

- 23% of all positives
- 27% of all hospitalizations

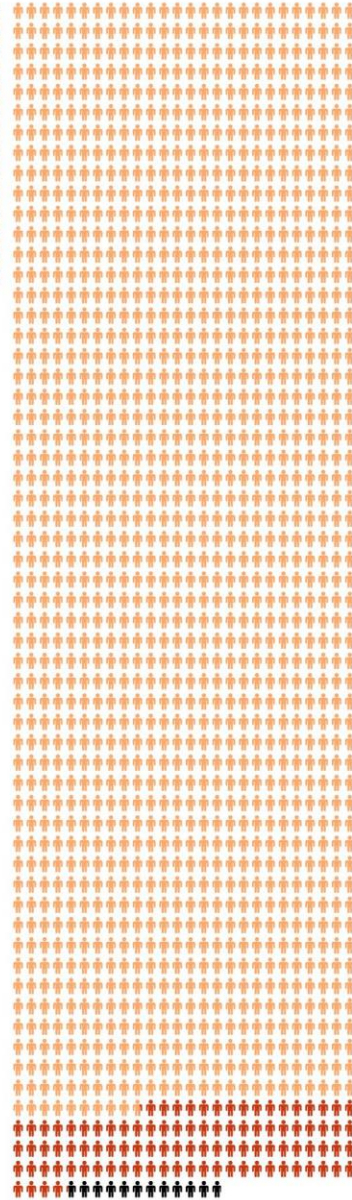
August 2021: Age-Adjusted COVID-19 Cases, Hospitalizations, and Deaths Among Fully Vaccinated and Not Fully Vaccinated People
Last Updated: 9/15/2021

Fully Vaccinated
Per 100,000 Fully Vaccinated People



● 360.7 Cases ● 11.5 Hospitalizations ● 1.1 Deaths

Not Fully Vaccinated
Per 100,000 Not Fully Vaccinated People



● 1,413.7 Cases ● 98.5 Hospitalizations ● 11.7 Deaths

VACCINE UPDATE

COVID-19 Vaccines for Wisconsin residents

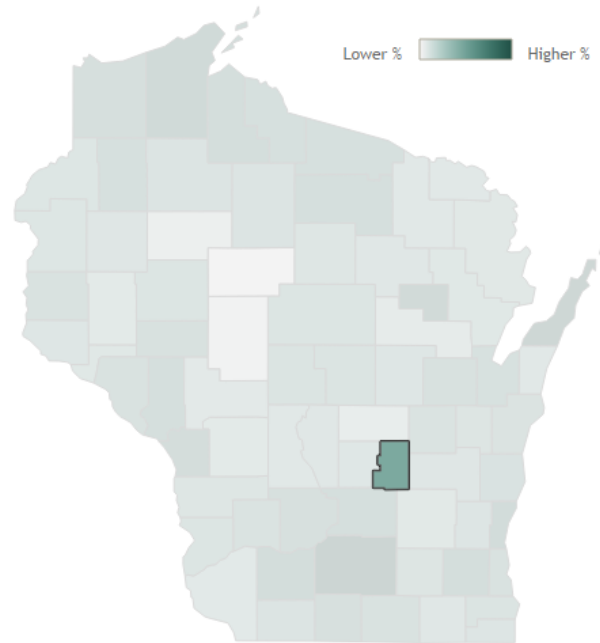
Updated: 9/15/2021

HERC region data

- Total population who have received at least one dose
- Total population who have completed the series
- Adults (18+) who have received at least one dose
- Adults (18+) who have completed series

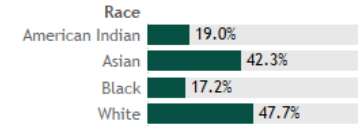
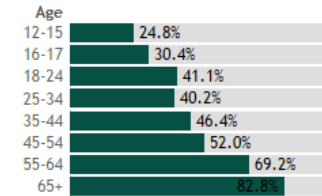
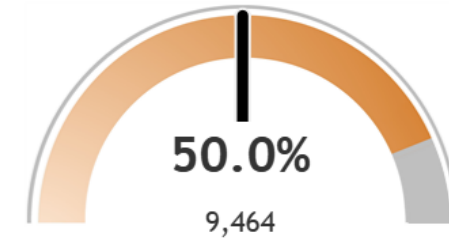
Percent of Wisconsin residents who have received at least one dose by county

Click a county to filter data



Percent of Green Lake County residents who have received at least one dose

The orange represents the population for whom the vaccine is authorized. The gray indicates the population under 12 years of age for whom the vaccines are not authorized.



*4.0% of records reported a race of "Other".

*2.0% of records reported an unknown race

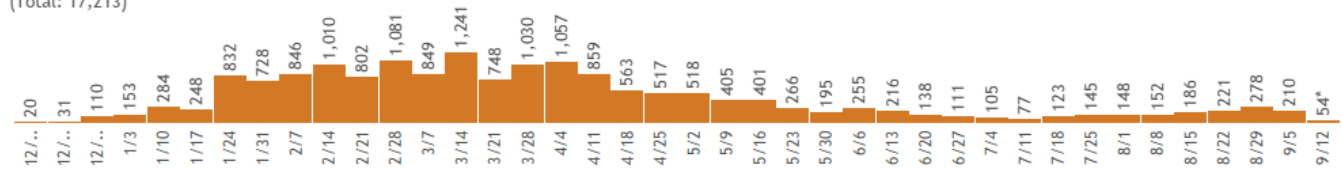


*0.2% of records were reported without sex.

*1.8% of records were reported without ethnicity.

[View more data on racial and ethnic disparities in Wisconsin](#)

Vaccine doses for Green Lake County residents by week
(Total: 17,213)

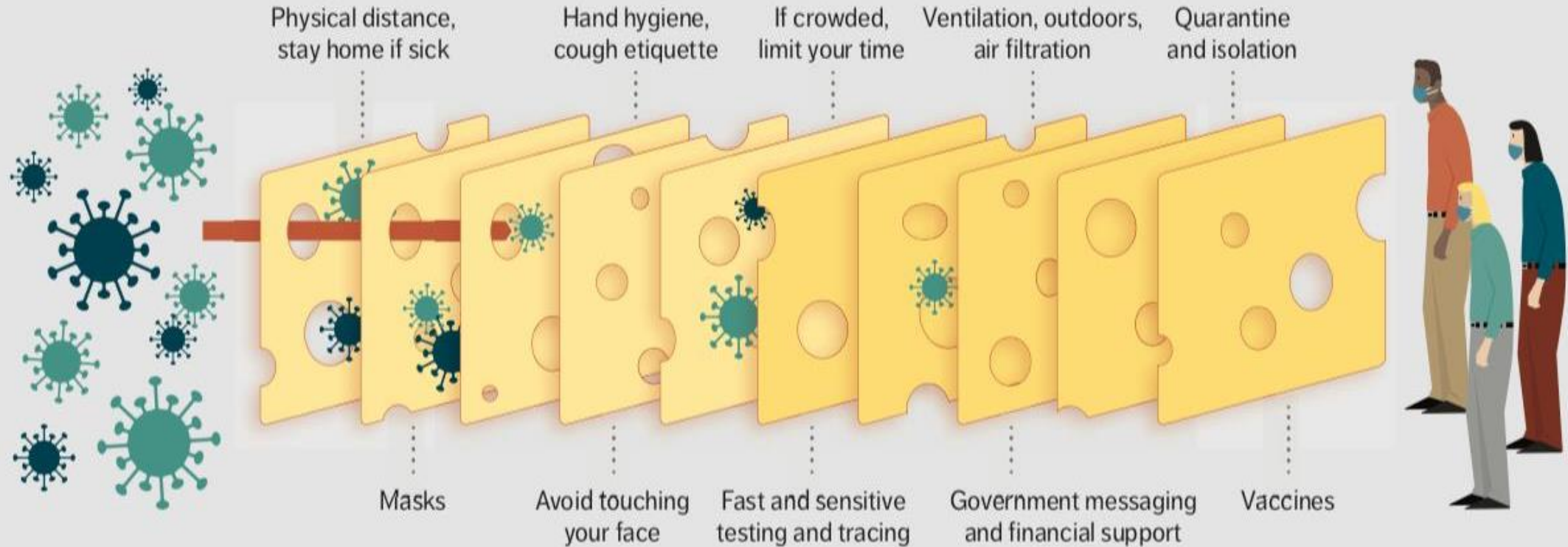


*Current week may be incomplete.

THE SWISS CHEESE MODEL

PERSONAL RESPONSIBILITIES

SHARED RESPONSIBILITIES



THE “SWISS CHEESE APPROACH”

NO ONE STRATEGY WILL COMPLETELY PREVENT COVID-19. WE NEED TO IMPLEMENT ALL STRATEGIES DURING TIMES OF HIGH LEVELS OF COMMUNITY TRANSMISSION TO KEEP OUR COMMUNITY AS HEALTHY AS POSSIBLE.